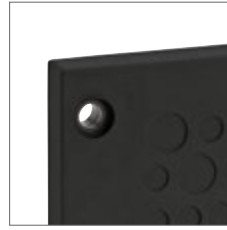


KEL-DPZ 24

Cable Entry Plates



Also available in black.



Also available with threaded bushings.



Membrane on front



Description	Type	Order No.	Number of cables	PU
-------------	------	-----------	------------------	----

Product Description

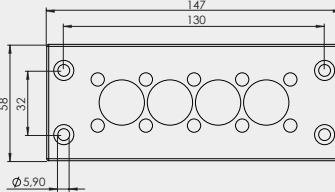
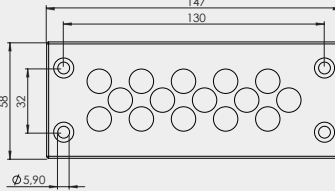
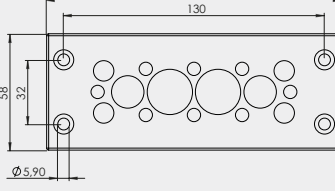
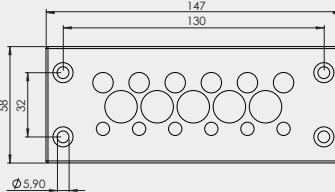
KEL-DPZ entry plates are designed to route and seal up to 121 cables without connectors or fiber optics (from 1.5 mm to 22 mm in diameter) in limited space.

The KEL-DPZ products are a cost and time saving alternative to traditional cable glands.

The assembly of the KEL-DPZ 24 with cables or pneumatic hoses can be done quick and easy. Simply make a small hole in the thin membrane, push the cables through. The KEL-DPZ 24 provides strain relief and protection up to IP66 / NEMA type 12.

The size DPZ 24 matches exactly the cut-out dimensions of 24-pin standard industrial connectors.

ST-B Plugs can be used for sealing pierced membranes if cables have been removed.

	KEL-DPZ 24 14	<input type="checkbox"/> 43700 <input type="checkbox"/> 50700	10× 3.2 - 6.5 mm 4× 16 - 22 mm	10
	KEL-DPZ 24 15	<input type="checkbox"/> 43720 <input type="checkbox"/> 50720	15× 7.2 - 12 mm	10
	KEL-DPZ 24 16	<input type="checkbox"/> 43725 <input type="checkbox"/> 50725	8× 3.2 - 6.5 mm 4× 5 - 9.7 mm 2× 9 - 16.2 mm 2× 16 - 22 mm	10
	KEL-DPZ 24 17	<input type="checkbox"/> 43705 <input type="checkbox"/> 50705	6× 3.2 - 6.5 mm 6× 5 - 10.2 mm 5× 9 - 16.2 mm	10

* Only valid for gray product types



KEL-DPZ 24 Cable Entry Plates



Conical shape on back provides additional sealing and strain relief



Type	Order No.	Number of cables	PU	Description
------	-----------	------------------	----	-------------



KEL-DPZ 24 25	□ 43710 ■ 50710	12x 3.2 - 6.5 mm 7x 4.8 - 9.7 mm 6x 7.5 - 12 mm	10	
KEL-DPZ 24 32	□ 43730 ■ 50730	21x 3.2 - 6.5 mm 8x 5 - 10.2 mm 3x 7.5 - 12 mm	10	
KEL-DPZ 24 42	□ 43715 ■ 50715	42x 3.2 - 6.5 mm	10	
KEL-DPZ 24 121	□ 43735 ■ 50735	119x 1.5 - 2.6 mm 2x 2.5 - 5 mm	10	

Advantages & Benefits

- Fast and easy assembly
- High cable density
- Dual sealing according to IP65/IP66/NEMA type 12
- Automatic sealing and strain relief for the cable
- Hygienic design

Specifications

Material	Frame: Polyamide (PA) Sealing plate: Elastomer
Color	□ gray (similar RAL 7035) ■ black
Flame class	UL94-Vo
IP rating	IP65/IP66 (certified acc. to EN 60529)
NEMA type rating	NEMA type 12 (acc. to UL 50E)
Temperature	- 40°C to + 90°C (static) - 40°F to + 194°F (static)
Properties	Halogen-free, silicone-free
Cut-out dimensions	36 × 112 mm / page 192 - 193
Plate depth	14 mm

Accessories

ST-B Plugs	76
KEL-EMC-PF Grounding mounts	123
FP Flanged plates	152 - 157

* Only valid for gray product types.